

Isolation and Rapid identification of *Candida* species from the Oral cavity

C. Manikandan* and A. Amsath

P.G. and Research Department of Zoology, Khadir Mohideen College, Adirampattinam-614701, Tamil Nadu, India

*Corresponding Author Email: drmanikandan66@gmail.com

ABSTRACT

CHROMagar Candida is a new differential culture medium that allows the isolation and presumptive identification of species of yeast of clinical importance. During the past two decades, there has been a significant increase in the prevalence of fungal infections caused by *Candida* species. The aim of the study was to isolate and identify *Candida* species from the oral cavity with *CHROMagar Candida*. This study was carried out in 30 patients with infections aged 21 to 90 years. Swabs samples were taken from oral cavity and were cultured directly on Sabouraud dextrose agar medium. In this study shows that *CHROMagar Candida* can easily identify four species of *Candida* on the basis of colonial color and morphology, and accurately differentiate between them i.e. *Candida albicans*, *Candida glabrata*, *Candida tropicalis* and *Candida krusei*. Results showed the prevalence of *C. albicans* ($n = 21$, 70%), *C. glabrata* ($n = 5$, 16.6%), *C. krusei* ($n = 2$, 6.7%), and *C. tropicalis* ($n = 2$, 6.7%). In this investigation, *CHROMagar* produced light green colonies and were considered as *Candida albicans*, Pink with a darker mauve center colonies were identified as *Candida glabrata*, pink with pale borders colonies were identified as *Candida krusei*, and dark blue, purple diffusion colonies were identified as *Candida tropicalis*. *CHROMagar* is extremely useful in making a rapid presumptive identification of common yeast species. This capability plus the ability to detect mixed cultures of *Candida* species promises to improve and streamline the work flow in the mycology and clinical microbiology laboratory.

Key words: *CHROMagar candida*, oral cavity, *Candida albicans*, *Candida glabrata*.

INTRODUCTION

Candida species are considered as one of the most important causes of human infections. Candidacies are a common infection caused by yeast-like fungus¹. The oral cavity is inhabited by more than 700 microbial species and many intrinsic and extrinsic factors affect the composition, metabolic activity and pathogenicity of the highly diversified oral microflora^{2,3,4}. *Candida* is not harmful in healthy hosts, but may cause opportunistic infections in immunocompromised hosts, such as patients suffering from AIDS, leukemia and diabetes^{5,6,7}. It is generally believed that candidiasis arises from endogenous commensal strains inhabiting the oral cavity, gastrointestinal tract and genitourinary system^{8,9}.

Several brands of chromogenic media are available for rapid identification of yeast¹⁰. These special media yield microbial colonies with varying pigmentation secondary substrates that react with enzymes secreted by microorganisms (www.chromagar.com). These media are specific, allowing the organisms to be identified to the species level by their color and colonial characteristics.

The manufacturer of *CHROMagar Candida* currently advertises its product as able to detect and differentiate many species, *C. albicans* by growth as light to medium green colonies, *C. tropicalis* by growth as steel blue colonies accompanied by purple pigmentation diffused into surrounding agar, and *C. krusei* by growth as large, fuzzy, rose colored colonies with white edges, after incubation for 48

hours at 37°C, as also reported in several studies¹¹. Use of chromogenic media in clinical microbiology laboratories for the isolation and presumptive identification of important *Candida* species is easy to perform, requires less time and is cost effective too^{12, 13}. In this study our goal was to evaluate the usefulness of CHROMagar *Candida* for detection and identification of major *Candida* species with accuracy to reduce the time of identification, and its characterization from poly fungal specimens.

MATERIAL METHODS

A total of 30 *Candida* species isolated from randomly selected 70 clinical specimens from the oral cavity swabs samples. The study was conducted from June 2011 to December 2012 for a period of six months, in the Gangasaras Diagnostic centre, Pattukkottai.

Preparation of CHROMagar *Candida*: CHROMagar *Candida* (Himedia) was prepared according to the manufacturer's instructions. CHROMagar *Candida* is composed of (per litre): peptone (10 g), glucose (20 g), agar (15 g), chloramphenicol (0.5 g) and “chromogenic mix” (2 g). Twelve grams of CHROMagar *Candida* powder which was added to 250 ml of sterile distilled water in a sterile Erlenmeyer flask. The suspension was completely dissolved by boiling (<100°C) and mixing. The medium does not require sterilization by autoclave, therefore after cooling in a water bath to 45°C the agar was poured into sterile petri dishes¹⁴. After allowing cooling, the plates were stored at 4°C prior to use.

Samples were obtained by swabbing oral cavity area of buccal mucosa and tongue with a sterile cotton swab, then were plated onto Sabouraud's dextrose agar (SDA) (Himedia) and incubated at 37°C for 48 hours. Growth on SDA colonies were inoculated into germ tube test. Yeast colonies growing on each SDA tube were resuspended and 10 µL of suspension solution was used to inoculate plates with CHROMagar *Candida* agar medium. Inoculated plates were incubated at 37°C and read for up to 7 days. Plates were observed for fungal growth using morphology and colour to determine the presence of yeasts. As per the manufacturer, *Candida albicans*, *C.tropicalis*, *C.krusei* and *Candida glabrata* were identified by the production of green, dark blue, pink and Pink with a darker mauve center coloured colonies, respectively (www.chromagar.com).

RESULTS

A total of randomly selected 70 oral cavity swab samples were collected from the infected patients attending the various private Hospitals in Pattukkottai, Tamil Nadu. Out of 70 samples, *Candida* species were isolated from 30 oral swab samples (43.0%) (Table 1). This study was carried out in 30 patients with infections aged 21 to 90 years. All of the yeast isolates tested grew on CHROMagar *Candida* medium. After 24 hours of incubation at 37°C, the majority of yeasts had grown well, forming colonies of 1 to 5 mm in diameter; however, growth and colony color development were inconsistent after 24 hours of incubation, and color readings were therefore made only after 48 hours of incubation, as specified in the manufacturer's instructions.

The result of this study shows that CHROMagar *Candida* can easily identify four important species of *Candida* on the basis of colonial color and morphology, and accurately differentiate between them i.e. *Candida albicans*, *Candida glabrata*, *Candida tropicalis* and *Candida krusei*. The majority of *Candida* species amongst the *Candida* isolates were *Candida albicans* (70%), followed by *C. glabrata* (16.6%), *C. krusei* (6.7%) and *C. tropicalis* (6.7%).

In this investigation, all the isolates of *Candida albicans* formed light green to green colonies on CHROMagar (Fig.1). *Candida glabrata* isolates formed Pink with a darker mauve center coloured colonies on CHROMagar *Candida* (Fig.4). After 48 hours, *Candida krusei* colonies were easily distinguishable from those of other yeasts that formed smooth, brownish pink to brownish purple colonies on CHROMagar *Candida* (Fig 2, 3). *Candida tropicalis* isolates all developed a distinctive dark blue gray central color after 48 hours of incubation (Fig 4). *Candida* species were isolated from 21 male patients and only from 9 female patients. The highest rate of isolation of *Candida* was between the age of 50 and 90 (Table 2).

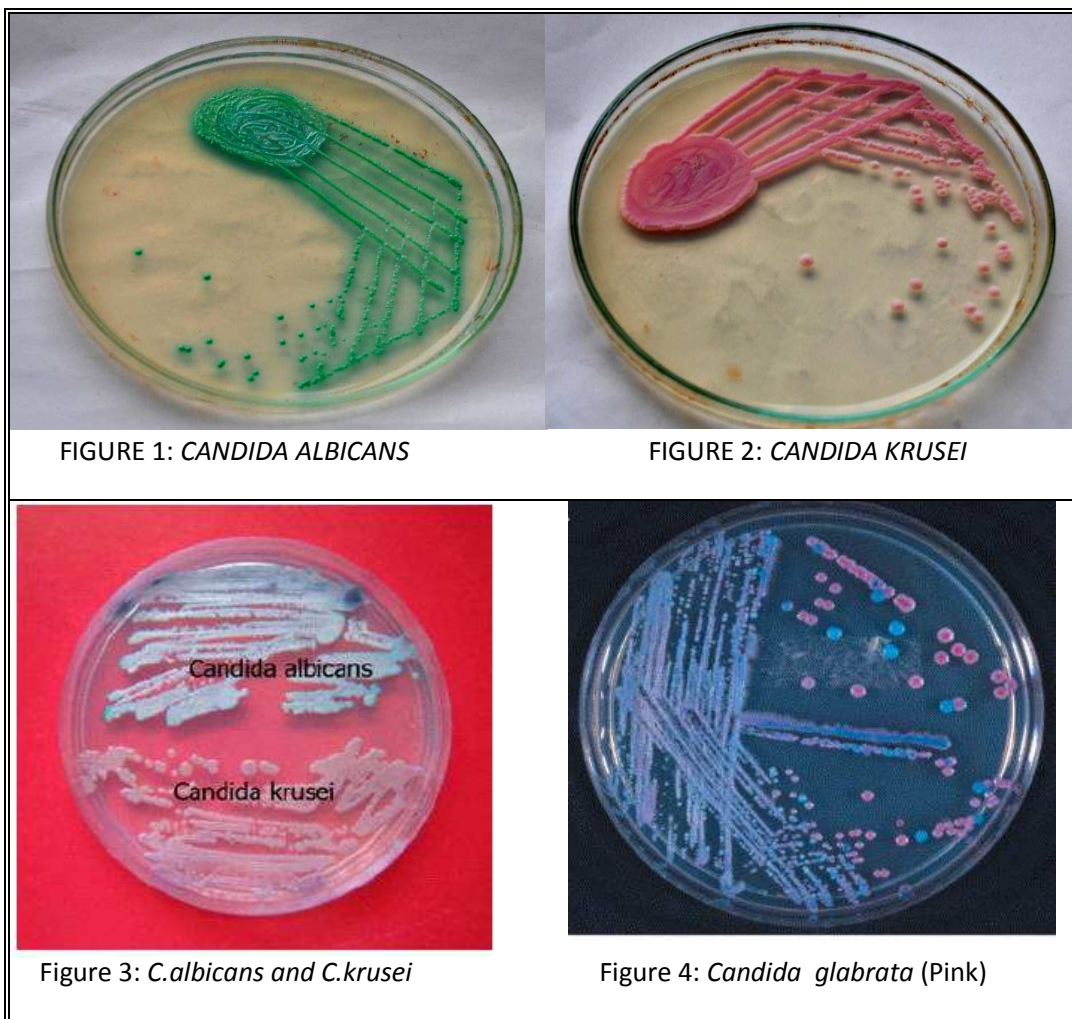


Table 1: Different species of Candida species isolated from oral cavity

Species	No. of isolates	% of Isolates	Colour on CHROMagar	Germ Tube
<i>C.albicans</i>	21	70%	Green	+
<i>C. glabrata</i>	5	16.6%	Pink with a darker mauve center	-
<i>C.krusei</i>	2	6.7%	Pink	-
<i>C.tropicalis</i>	2	6.7%	Dark blue	-

Table 2: Age distribution among which Candida species isolated

Age (Years)	No. of isolates	% of isolates
21-40	3	10
41-60	12	40
61-80	11	36.7
Above 80	4	13.3
Total	30	100

DISCUSSION

The total numbers of 30 *Candida* species were isolated in the oral cavity. *Candida albicans* was found to be the predominant with 70% (21/30). In agreement with findings of others (Back-Brito *et al.*, 2009; Williams and Lewis, 2000), the majority of yeast isolates from oral cavity swabs were *C.albicans* (70%), but it was often recovered in association with other yeasts. This was followed by *C.glabrata* 16.6% (5/30), *C.krusei* 6.7% (2/30) and *C.tropicalis* 6.7% (2/30) (Table 1). Germain *et al.*, 2001, found the distribution of *Candida* species to be as follows: *C. albicans* 54%, *C.glabrata* 15%, *C.parapsilosis* 12%, *C.tropicalis* 9% and *C.krusei* 3%. A study conducted by Smitha Byadarahally Raju *et al.*, 2011 in Sri Hasanamba Dental College and Hospital, Karnataka, they reported a similar pattern of distribution of species. The findings of the present study are more or less similar with the previous study. This could be due to variation in geographical distribution of various *Candida* species.

CHROMagar candida is one of the most widely used media in the mycology laboratory. Colony characteristics presented in Table 1 for identification of *C. albicans*, *C. glabrata*, *C. krusei* and *C. tropicalis* using CHROMagar were in agreement with previously published reports (Beighton *et al.*, 1995; Hospenthal *et al.*, 2006). The sensitivity and specificity of CHROMagar candida media for identifying *C.krusei* and *C.tropicalis* were over 99%. However, other *Candida* species *C.glabrata* also produce Pink with a darker mauve center coloured colonies on CHROMagar (Beighton *et al.*, 1995; Eraso *et al.*, 2006; San Millan *et al.*, 1996). In the present study, the isolation rates of *Candida* species is high in ages ranging from 41-80 years old. The similar studies conducted by Resende Pinho (2002) and Zaremba (2006), found the isolation rates of *Candida* species to be high in ages ranging from 60-80 years.

CONCLUSION

C. albicans is the most frequently isolated yeast from the oral cavity infection patients. CHROMagar Candida is a useful culture medium for the isolation and direct identification of *Candida* species, especially *Candida albicans*, *Candida glabrata*, *Candida krusei* and *Candida tropicalis*. Easy to prepare, with low cost, CHROMagar Candida proves to be a useful medium for the identification of species of yeast that are isolated with greater frequency in clinical material and for the identification of mixed cultures.

ACKNOWLEDGEMENTS

The authors would like to thank the Principal and HOD of Zoology, Khadir Mohideen College, Adirampattinam-614701 for the facilities provided to carry out the work and the Senior Laboratory Technologists of Gangasaras Diagnostic and Research Centre, Pattukkottai-614601, Thanjavur district, Tamilnadu, India for their consistent support and help in this study.

REFERENCES

1. Chander J., Text book of Medical mycology. 2nd ed. New Delhi: Mehta Offset Pvt Ltd. Naraina II, pp 212-31 (2002)
2. Samaranayake LP, Cheung LK, and Samaranayake YH., Fungal infections associated with HIV infection. *Oral Dis.* **8**:151-160 (2002)
3. Aas JA, Paster BJ, Stokes LN, Olsen I and Dewhirst FE., Defining the normal bacterial flora of the oral cavity. *J. Clin. Microbiol.* **43**: 5721-5732 (2005)
4. Zahir RA and Himratul-Aznita VH., Distribution of *Candida* in the oral cavity and its differentiation based on the internally transcribed spacer (ITS) regions of rDNA Yeast. *Yeast*; **30**: 13–23 (2013)
5. Batool Sadeghi Nejad, Ablollah Rafiei and Fereshteh Moosanejad., Prevalence of *Candida* species in the oral cavity of patients with periodontitis. *African Journal of Biotechnology* **10**: (15), pp. 2987-90 (2011)

6. Sayyada G N, Shazia T, H and Shahana Urooj Kazmi., Use of CHROMagar Candida for the presumptive identification of *Candida* species directly from clinical specimens in resource-limited settings. *Libyan J Med*, **5**: 2144 (2010)
7. Khaled H Abu-Elteen, Mawieh A Hamad and Suleiman A., Prevalence of Oral *Candida* Infections in Diabetic Patients. *Bahrain Medical Bulletin*, **28**: (2006)
8. Cannon RD, Holmes AR, Mason AB and Monk BC., Oral *Candida*: clearance colonization, or candidiasis? *J Dent Res*, **74**: 1152-61 (1995)
9. Bharathi M and Usharani A., Pathogenic fungal isolates in sputum of HIV positive patients. *JAHR*. **3**: 107-113 (2011)
10. Cooke, V. M., Miles, R. J., Price, R. G., Midgley, G., Khamri, W. and Richardson AC., New chromogenic agar medium for the identification of *Candida* spp. *Appl Environ Microbiol* **68**: 3622–3627 (2002)
11. Topley and Wilson. Microbiology and Microbial infections: Medical Mycology, 10th Ed., Hodder Arnold. Ch.15, pp 255 (2006)
12. Pfaller, M. A., Houston, A. and Coffmann, S., Application of CHROMagar Candida for rapid screening of clinical specimens for *Candida albicans*, *Candida tropicalis*, *Candida krusei*, and *Candida glabrata*. *J Clin Microbiol* **34**: 58–61 (1996)
13. Willinger, B., Hillowoth, C., Selitsch, B. and Manafi, M., Performance of Candida ID, a new chromogenic medium for presumptive identification of *Candida* species, in comparison to CHROMagar Candida. *J Clin Microbiol* **39**: 3793–3795 (2001)
14. Odds, F.C. and Bernaerts, R., CHROMagar Candida, a new differential isolation medium for presumptive identification of clinically important *Candida* species. *J. Clin. Microbiol.* **32**: 1923-1929 (1994)
15. Back-Brito GN, Mota AJ, Vasconcellos TC, Querido SMR, Jorge AOC, Reis ASM and Balducci Cristiane Y., Frequency of *Candida* spp. in the Oral Cavity of Brazilian HIV-Positive Patients and Correlation with CD4 Cell Counts and Viral Load. *Mycopathol.* **167**: 81-87 (2009)
16. Beighton, D., Ludford, R., Clark, D. T., Brailsford, S. R., Pankhurst, C. L., Tinsley, G. F., Fiske, J., Lewis, D and Daly, B., Use of CHROMagar *Candida* medium for isolation of yeasts from dental samples. *J Clin Microbiol* **33**: 3025–3027 (1995)
17. Germain G, Laverdiere M, Pelletier R., Prevalence and antifungal susceptibility of 442 *Candida* isolates from blood and other normally sterile sites: Results of a 2- year (1996-1998) multicentre surveillance study in Quebec, Canada. *J Clin Microbiology.* **39**: 949-953 (2001)
18. Hospenthal, D. R., Murray, C. K., Beckius, M. L., Green, J. A. and Dooley, DP., Persistence of pigment production by yeast isolates grown on CHROMagar Candida media. *J Clin Microbiol* **40**: 4768–4770 (2002)
19. Pinho Resende JC, De Resende MA and Saliba JL., Prevalence of *Candida* species in hospitalized patients and their risk factors. *Mycoses.* **45**: 306 (2002)
20. Smitha Byadarahally Raju and Shashanka Rajappa., Isolation and Identification of *Candida* from the Oral Cavity. International Scholarly Research Network ISRN Dentistry, **10**: 5402 (2011)
21. Williams DW and Lewis MAO., Isolation and identification of *Candida* from the oral cavity. *Oral Diseases*, **6**: No. 1, pp. 3–11 (2000)
22. Zaremba ML, Daniluk, Cylwik Rokicka D, Kierklo A and Tokajuk G., Incidence rate of *Candida* species in the oral cavity of middle aged and elderly subjects. *Advances medical science*, **51**: (2006)